

| Precios orientativos | Anterior | | Actual | | Variación |
|-----------------------------|----------|-------|--------|-------|-----------|
| | Mín. | Máx. | Mín. | Máx. | |
| COTIZACION CERDO (1) | | | | | |
| Porcino Base Canal II | 2,445 | 2,451 | 2,407 | 2,413 | -0,038 |

| Variación anual | |
|-----------------|-------|
| 0,246 | 11,3% |

COTIZACION PIEZAS REFRIGERADAS AL POR MAYOR

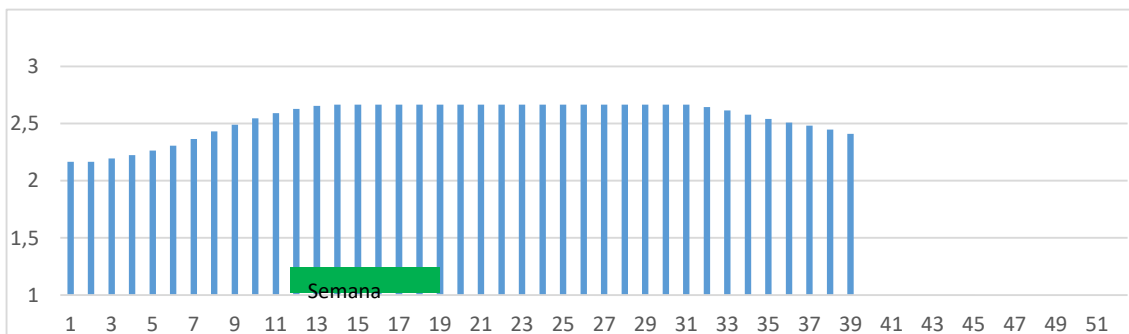
| * A MAYORISTAS (2) | Anterior | | Actual | | Variación |
|--------------------------|----------|------|--------|------|-----------|
| | Mín. | Máx. | Mín. | Máx. | |
| Chuleta Gerona Mayorista | 4,81 | 4,84 | 4,76 | 4,79 | -0,05 |
| Lomo Caña Mayorista | 5,77 | 5,80 | 5,67 | 5,70 | -0,10 |
| Costilla Mayorista | 6,60 | 6,63 | 6,55 | 6,58 | -0,05 |
| Filete Mayorista | 7,85 | 7,88 | 7,85 | 7,88 | 0,00 |
| Cabeza Lomo Mayorista | 5,95 | 5,98 | 5,90 | 5,93 | -0,05 |

| Variación anual | |
|-----------------|-------|
| 0,75 | 18,6% |
| 0,85 | 17,5% |
| 0,40 | 6,5% |
| 1,50 | 23,5% |
| 1,15 | 24,1% |

| * A FABRICANTES (3) | Anterior | | Actual | | Variación |
|-------------------------------|----------|------|--------|------|-----------|
| | Mín. | Máx. | Mín. | Máx. | |
| Jamón Redondo Clasificado Fab | 3,51 | 3,54 | 3,51 | 3,54 | 0,00 |
| Jamón Redondo Magro (fino) | 2,91 | 2,94 | 2,91 | 2,94 | 0,00 |
| Jamón York Fabricante | 2,98 | 3,01 | 2,98 | 3,01 | 0,00 |
| Jamón York 4D (86%) | 3,45 | 3,48 | 3,45 | 3,48 | 0,00 |
| Espalda sin Piel Fab. | 2,51 | 2,54 | 2,51 | 2,54 | 0,00 |
| Espalda York 4D (74%) | 3,40 | 3,43 | 3,40 | 3,43 | 0,00 |
| Panceta cuadro | 3,21 | 3,24 | 3,21 | 3,24 | 0,00 |
| Bacon sin Hueso a Fabricante | 3,64 | 3,67 | 3,64 | 3,67 | 0,00 |
| Lomo industrial | S/C | S/C | S/C | S/C | |
| Magro 85/15 | S/C | S/C | S/C | S/C | 0,00 |
| Magro 70/30 | S/C | S/C | S/C | S/C | 0,00 |
| Papada sin Piel Fabric. | 2,77 | 2,80 | 2,77 | 2,80 | 0,00 |
| Tocino sin Piel Fabricante | 1,62 | 1,65 | 1,62 | 1,65 | 0,00 |
| Cabeza de lomo industrial | S/C | S/C | S/C | S/C | 0,00 |

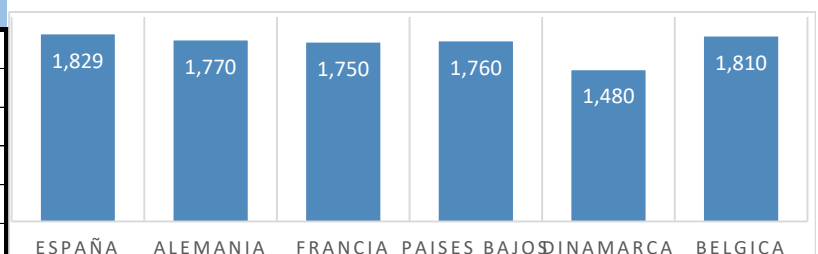
| Variación anual | |
|-----------------|-------|
| 0,54 | 18,0% |
| 0,54 | 22,5% |
| 0,42 | 16,2% |
| 0,47 | 15,6% |
| 0,38 | 17,6% |
| 0,52 | 17,9% |
| -0,15 | -4,4% |
| -0,15 | -3,9% |
| 0,60 | |
| 0,52 | |
| 0,40 | |
| 0,30 | 12,0% |
| -0,15 | -8,3% |
| -0,05 | |

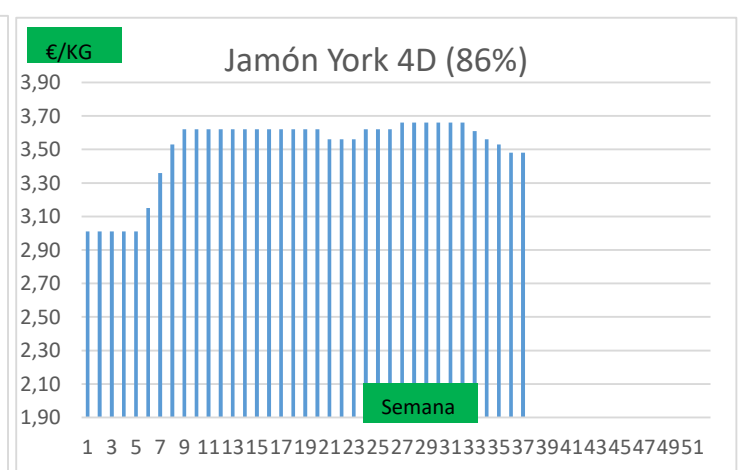
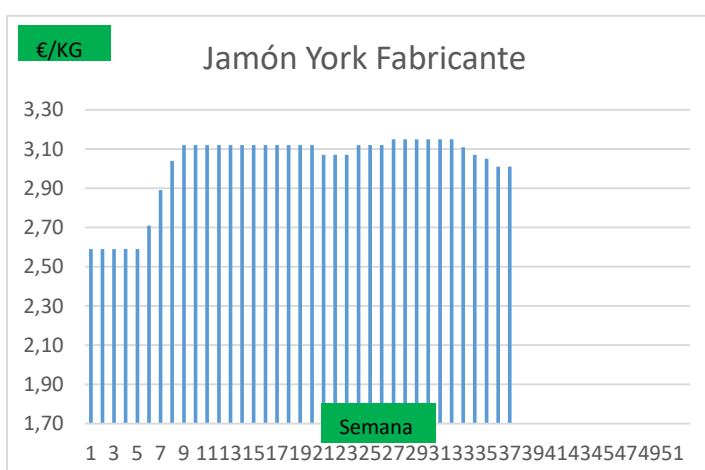
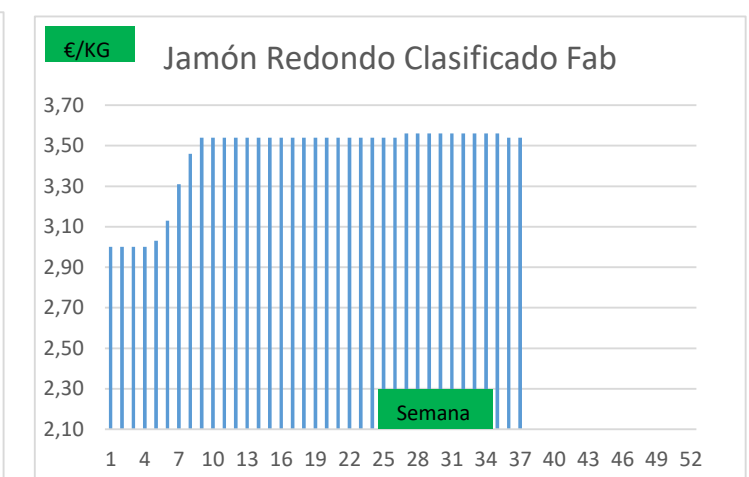
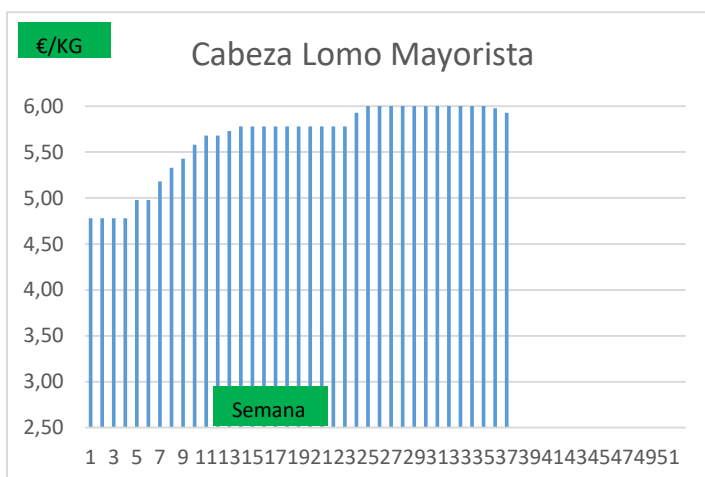
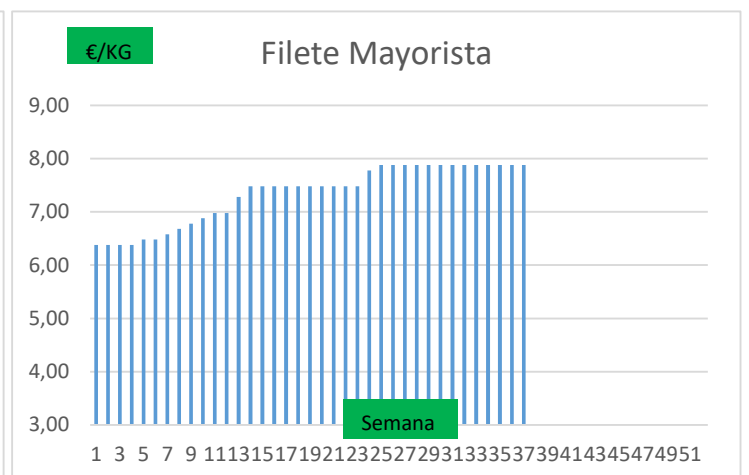
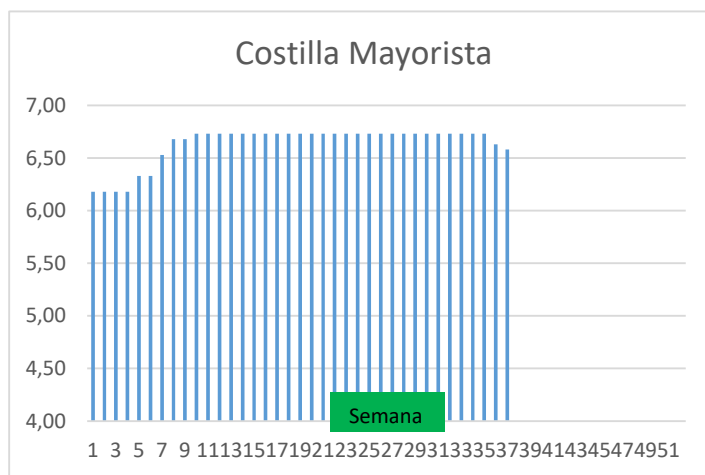
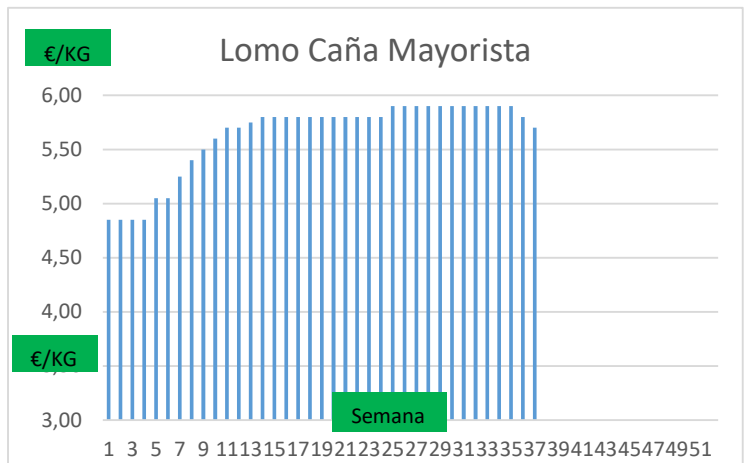
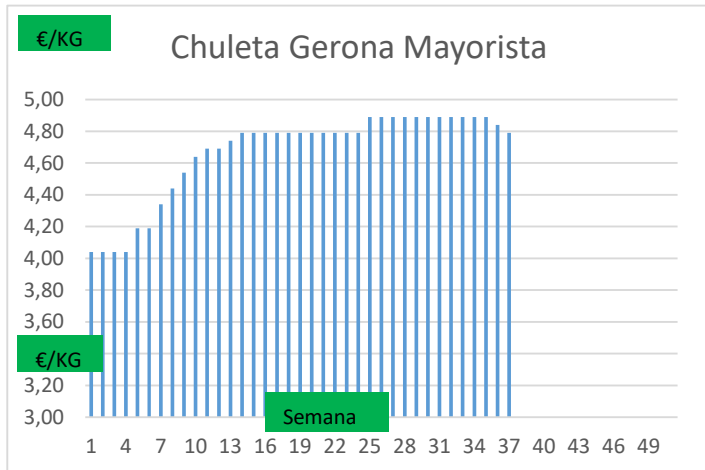
COTIZACION CANAL 2ª



PRECIO VIDA PORCINO EUROPA

| | Anterior | Actual | DIF. |
|--------------|----------|--------|--------|
| ESPAÑA | 1,858 | 1,829 | -0,029 |
| ALEMANIA | 1,810 | 1,770 | -0,040 |
| FRANCIA | 1,770 | 1,750 | -0,020 |
| PAISES BAJOS | 1,760 | 1,760 | 0,000 |
| DINAMARCA | 1,500 | 1,480 | -0,020 |
| BELGICA | 1,810 | 1,810 | 0,000 |





GRÁFICOS PRECIO DESPIECE PORCINO 2023 LONJA BARCELONA

