

## GRASA ANIMAL

€/TM

	ANTERIOR	ULTIMO	DIF
<b>LONJA DE LERIDA</b>		05-ago	2-ago.
Grasa Animal Import. UE 10/12%	830	830	0,00
Grasa Animal Import.UE 3/5%	890	890	0,00
Manteca 1º	970	970	0,00
Manteca 2º	910	910	0,00
<b>LONJA DE BARCELONA</b>	ANTERIOR	ULTIMO	6-ago.
Grasa Animal Import.UE 3/5%	830	830	0,00
Grasa Animal Nacional 3-5%	900	900	0,00
Manteca 1ª	990	990	0,00
Manteca 2ª	940	940	0,00



**Cerdo**

1,848 €/kg vivo

=









**Lechón**

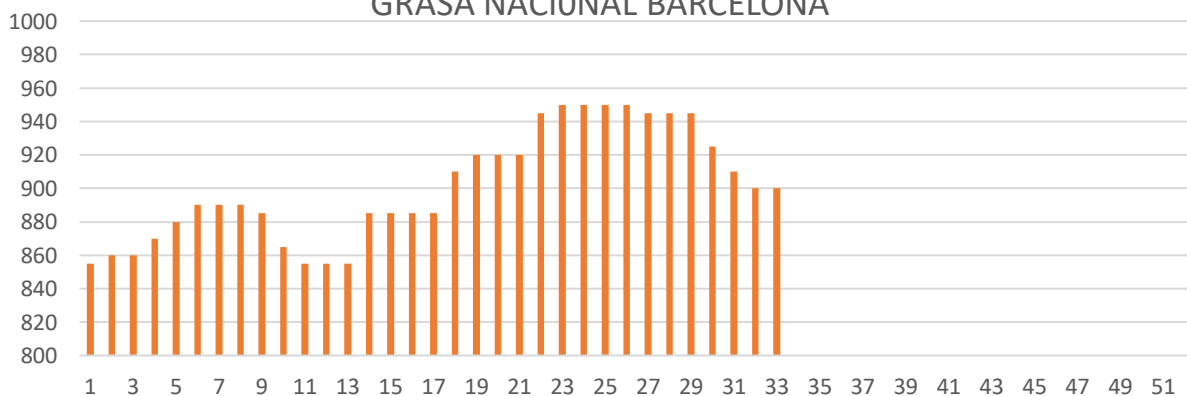
51,000 €/un

▼ -3,000

### Precios de las materias primas

 <b>Precio estimado del pienso</b>	294 €/t	▼-0,3
 <b>Trigo</b>	229 €/t	▼-1,0
 <b>Cebada</b>	212 €/t	—
 <b>Maíz</b>	226 €/t	▲1,0
 <b>Soja</b>	420 €/t	—
 <b>Grasa</b>	900 €/t	▼-10,0

### GRASA NACIONAL BARCELONA



■ GRASA NACIONAL BARCELONA